

# STANDARD MATERIALS OF THE COLLECTION

## LACQUERS, NATURAL COLOURS



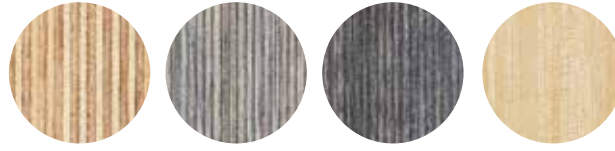
Birch 1  
natural colour

Beech 1  
natural colour

Oak 1  
natural colour

Ash 1  
natural colour

## TECHNICAL VENEER



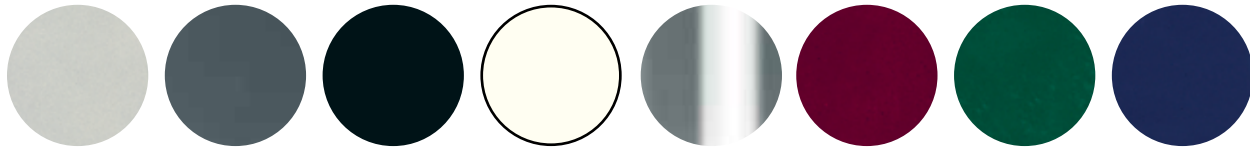
LPLY  
plywood

LSG  
deadwood  
grey

LMG  
dark grey

LN birch  
natural colour

## METAL COLOURS



IM-89  
silver

IM-88  
graphite

IM-72  
black  
(RAL 9005)

IM-73  
white  
(RAL 9016)

chrome

IM-84  
wine red

IM-85  
green

IM-86  
blue

## MELAMINE



Mel 130  
light grey

Mel 114  
white

## LAMINATE



Lam 221/321  
birch colour

Lam 224/324  
beech colour

Lam 328  
oak colour

Lam 215/315  
white

Lam 327  
dark grey

Lam 338  
black

Lam 230 /  
Lam IC  
light grey

Lam IC  
anthracite

Lam IC  
green

Lam IC  
red

Lam IC  
blue

## ISKU STANDARD STAIN COLOURS



Birch 1  
(beech colour)

Brown 1

Brown 2

Brown 3

Brown 4

Brown 5

Brown 6

Grey 1

Grey 2

Black 1

Green 1

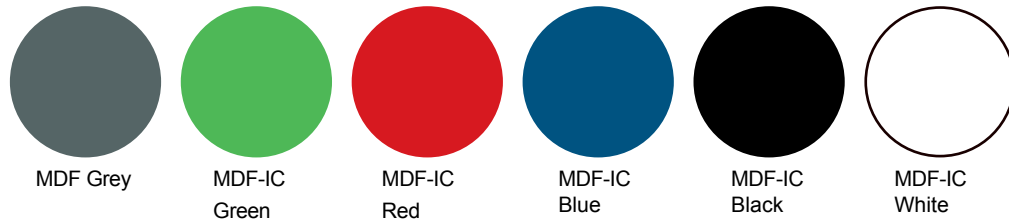
Isku Interior offers a wide range of wood stain colours for beech. The colour chart includes several shades of grey and brown as well as green and black. The wood stain gives an even colour and brings out the natural grain of wood.

Customer-specific special colours are delivered on special order, with the details to be specified in a separate offer. Any material options are presented alongside the product in question. Wood is a natural material. Material and colour differences in the raw material may cause colour differences in naturally coloured and stained products.

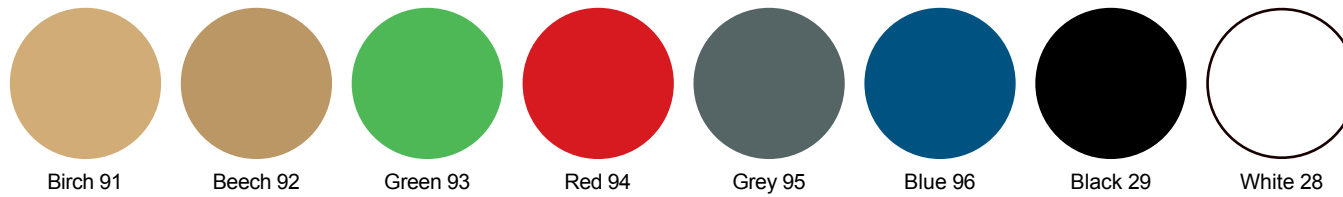
The availability of materials differs for each product. Due to print technology, the colours do not completely represent the actual colours.

# STANDARD MATERIALS OF THE COLLECTION

## COLOUR OPTIONS FOR TENDO OPPI MDF DOORS AND DRAWER FRONTS



## COLOUR OPTIONS FOR CAST EDGES



# SCREEN FABRICS

The central stock items are marked with ●. Due to print technology, the colours do not completely represent the actual colours.

VM = In stock

## XPRESS SCREEN FABRIC

100 % polyester

Care: Light vacuum, dry clean

Width: 170 cm

Weight: 159 g/m<sup>2</sup>

Colour fastness to light: 5-7 (EN ISO 105-B02), scale 1-8

SL 1



## SOUL SCREEN FABRIC

100 % wool

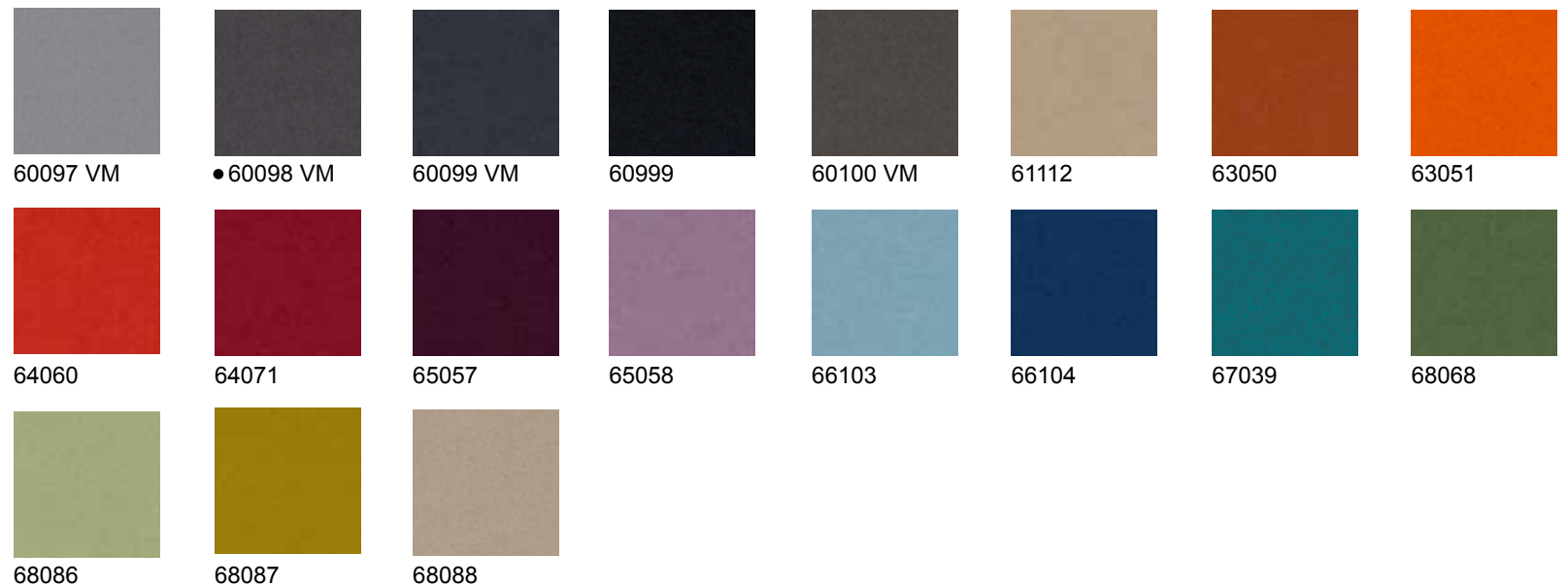
Care: Light vacuum

Width: 170 cm

Weight: 194 g/m<sup>2</sup>

Colour fastness to light: 5-7 (EN ISO 105-B02), scale 1-8

SL 1



Due to print technology, the colours do not completely represent the actual colours.

**BLAZER LITE  
SCREEN FABRIC**

100% wool  
Care: dry clean, damp cloth, Light vacuum  
Width: 170 cm  
Weight: 355g/m<sup>2</sup>  
Colour fastness to light: 5 (ISO 105-B02:2014)  
SL1



LTH46



LTH53



LTH57



LTH47



LTH49



LTH58



LTH52



LTH54



LTH48



LTH50



LTH56



LTH59



LTH51



LTH55



LTH60



LTH43



LTH41



LTH67



LTH42



LTH63



LTH64



LTH44



LTH61



LTH39



LTH65



LTH66



LTH68



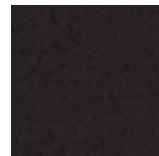
LTH40



LTH62



LTH70



LTH69

# UPHOLSTERY FABRICS

The central stock items are marked with ●. Due to print technology, the colours do not completely represent the actual colours.

VM = In stock

## FIGHTER

### UPHOLSTERY FABRIC

100 % polyester

Care: Wet cleaning, max. 40°C

130.000 Martindale

Width: 140 cm

Weight: 364 g/m<sup>2</sup>

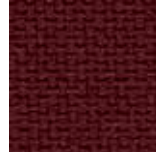
Colour fastness to light: 5-7 (EN ISO

105-B02), scale 1-8

SL 1



● 60999



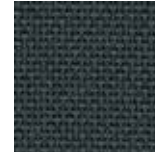
64102



68070



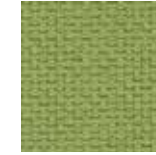
66083



60083



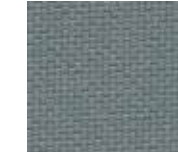
64103



68069



66082



60082



63044



61095



66081

The central stock items are marked with ●. Due to print technology, the colours do not completely represent the actual colours.

FAME  
UPHOLSTERY FABRIC

95% wool, 5% polyamide

Care: Dry clean

200.000 Martindale

Width: 140 cm

Weight: 450 g/m<sup>2</sup>

Colour fastness to light: 5-7 (EN ISO 105-B02),

scale 1-8

SL 1



Due to print technology, the colours do not completely represent the actual colours.

**FAME  
UPHOLSTERY FABRIC**

95% wool, 5% polyamide  
Care: Dry clean  
200.000 Martindale  
Width: 140 cm  
Weight: 450 g/m<sup>2</sup>  
Colour fastness to light: 5-7 (EN ISO  
105-B02),  
scale 1-8  
SL 1



68143



68144



68145



68146



68147

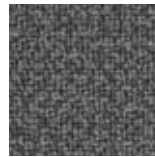


68148

---

**FAME HYBRID  
UPHOLSTERY FABRIC**

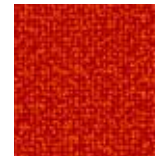
95% wool, 5% polyamide  
Care: Dry clean  
150.000 Martindale  
Width: 140 cm  
Weight: 450 g/m<sup>2</sup>  
Colour fastness to light: 5-7 (EN ISO  
105-B02), scale 1-8  
SL 1



1201



1301



1901



2301



2801



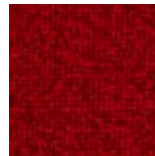
2901



1101



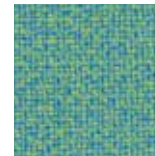
1401



2201



2401



2601



2701



1501



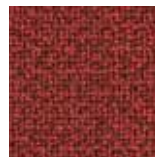
1601



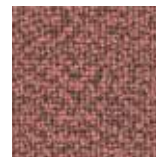
1701



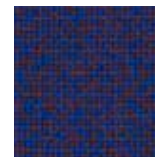
1801



2001



2101



2501

Due to print technology, the colours do not completely represent the actual colours.

**CRISP  
UPHOLSTERY FABRIC**

93% wool/ 7% polyamide

Care: Dry clean

200.000 Martindale

Width: 140 cm

Weight: 329 g/m<sup>2</sup>

Colour fastness to light: 5-7 (EN ISO 105-B02), scale 1-8

SL 1



04011



04012



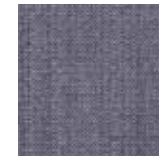
04013



04021



04022



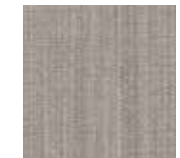
04023



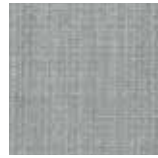
04031



04032



04033



04034



04114



04115



04116



04117



04118



04120



04121



04122



04123



04124



04125



04126



04127



04201



04202



04203



04211



04301



04302



04411



04412



04430



04431



04432



04601



04602



04603



04604



04605



Due to print technology, the colours do not completely represent the actual colours.

L = Also available laminated

**STEP**  
**UPHOLSTERY FABRIC**

100 % Trevira CS

Care: Wet cleaning, max. 74°C,  
dry clean

100.000 Martindale

Width: 140 cm

Weight: 340 g/m<sup>2</sup>

Colour fastness to light: 5-7 (EN ISO  
105-B02),

scale 1-8

SL 1



60004



60011



60021



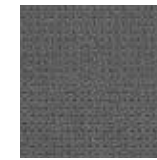
60089 L



60090 L



60091



60092



60999



61102



61103



61149



61150



62057



62073



63012



63075 L



63082



64013



64159 L



64177



64178



64179



64180



65011 L



65018



65023



65047 L



65090



65091



65092



65093 L



65094



65095



66018 L



66019



66148 L



66149



66150



66151



66152



67004



67007 L



67072



67073



68118



68119 L



68120



68121



68157



68158 L



68159



68160



68161



68162



68163



68164



68165

Due to print technology, the colours do not completely represent the actual colours.

**STEP MELANGE  
UPHOLSTERY FABRIC**

100 % Trevira CS

Care: Wet cleaning, max. 74°C,  
dry clean

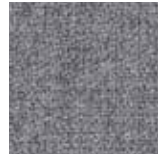
100.000 Martindale

Width: 140 cm

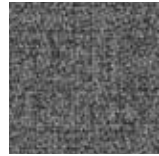
Weight: 340 g/m<sup>2</sup>

Colour fastness to light: 5-7 (EN ISO  
105-B02), scale 1-8

SL 1



60004



60011



60021



60090



60092



61102



61103



61104



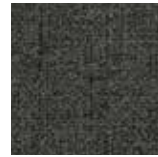
61149



61150



61151



61152



62057



62073



63075



63082



64013



64159



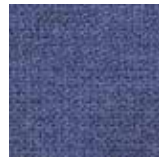
64177



64178



65047



65090



65091



65092



65093



65094



66018



66019



66148



64179



64181



64182



65011



65018



65023



66149



66150



66151



66152



67004



67007



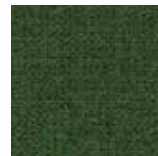
67072



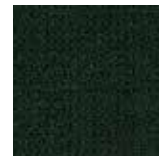
68118



68119



68120



68121



68157



68158



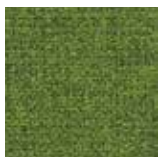
68159



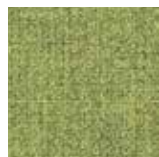
68160



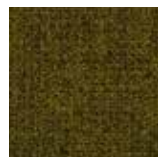
68161



68162



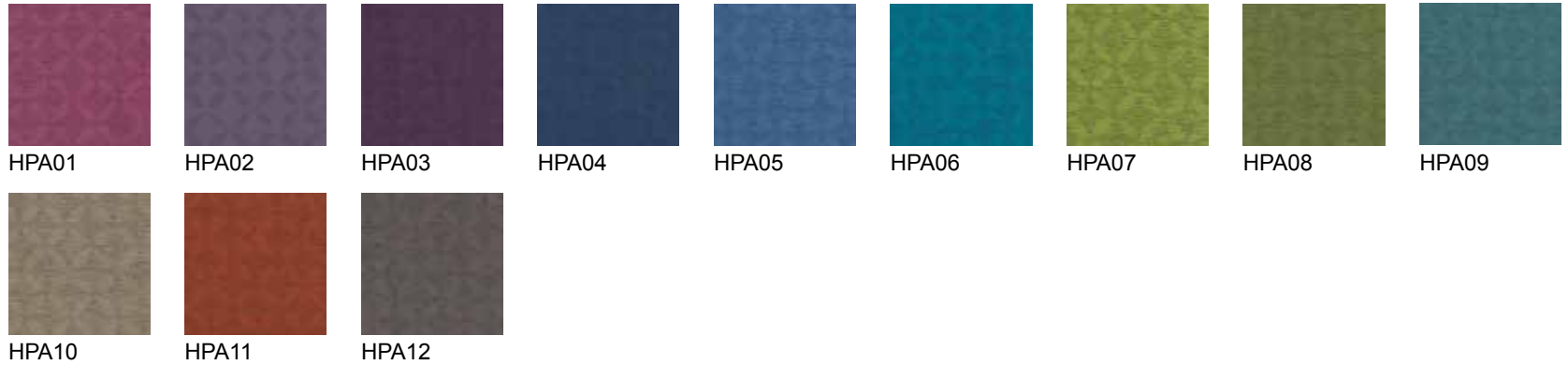
68163



68165

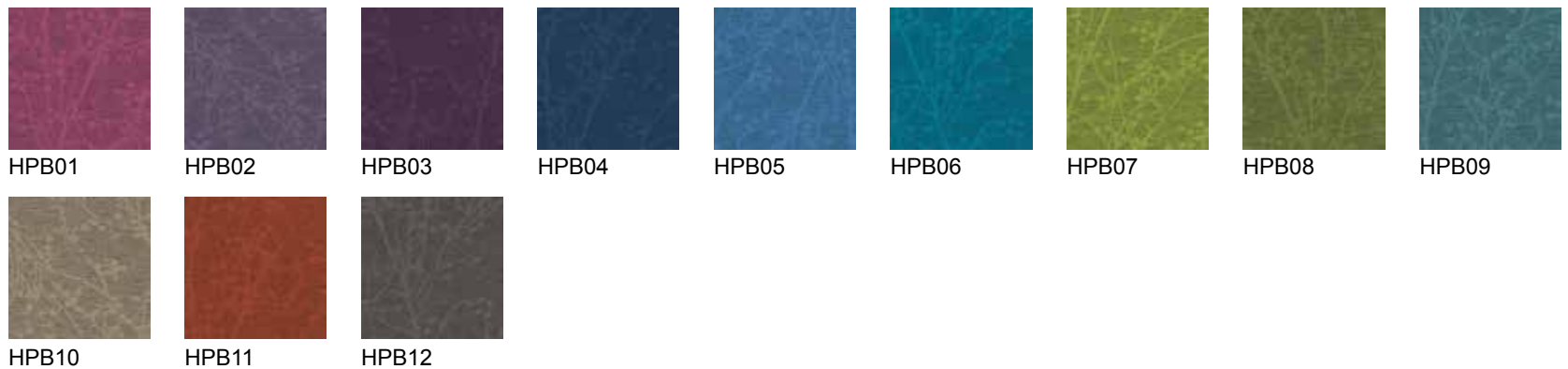
### HALCYON ASPEN UPHOLSTERY FABRIC

100% polyester with fire protection  
Are: Wash with mild detergent or max 10% chlorine water mix. If spilled with liquid blot it into the fabric. Regular vacuuming.  
50.000 Martindale  
Width: 140cm  
Weight: 405g/m<sup>2</sup> +-5%  
Colour fastness to light: 6 (ISO 105-B02:2014)  
SL1



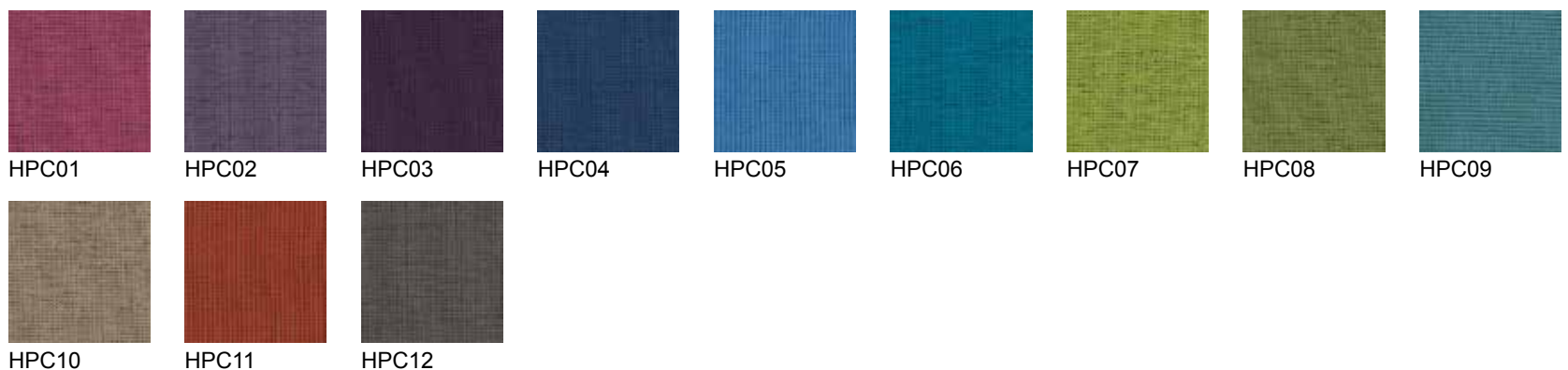
### HALCYON BLOSSOM UPHOLSTERY FABRIC

100% polyester with fire protection  
Are: Wash with mild detergent or max 10% chlorine water mix. If spilled with liquid blot it into the fabric. Regular vacuuming.  
50.000 Martindale  
Width: 140cm  
Weight: 405g/m<sup>2</sup> +-5%  
Colour fastness to light: 6 (ISO 105-B02:2014)  
SL1



### HALCYON CEDAR UPHOLSTERY FABRIC

100% polyester with fire protection  
Are: Wash with mild detergent or max 10% chlorine water mix. If spilled with liquid blot it into the fabric. Regular vacuuming.  
40.000 Martindale  
Width: 140cm  
Weight: 465g/m<sup>2</sup> +-5%  
Colour fastness to light: 6 (ISO 105-B02:2014)  
SL1



Due to print technology, the colours do not completely represent the actual colours.

**BLAZER  
UPHOLSTERY FABRIC**

100% wool  
Care: dry clean, damp cloth, light vacuum  
50.000 Martindale  
Width: 140cm  
Weight: 460g/m<sup>2</sup>  
Colour fastness to light: 5 (ISO 105-B02:2014)  
SL1

 CUZ47	 CUZ14	 CUZ86	 CUZ31	 CUZ67	 CUZ1A	 CUZ84	 CUZ87	 CUZ89		
 CUZ82	 CUZ83	 CUZ88	 CUZ21	 CUZ1B	 CUZ58	 CUZ90	 CUZ63	 CUZ13		
 CUZ85	 CUZ39	 CUZ18	 CUZ66	 CUZ1F	 CUZ53	 CUZ1K	 CUZ1M	 CUZ1D		
 CUZ1X	 CUZ1Z	 CUZ1C	 CUZ1L	 CUZ1N	 CUZ33	 CUZ02	 CUZ1H	 CUZ1E	 CUZ1J	 CUZ26
 CUZ2A	 CUZ1U	 CUZ1P	 CUZ28	 CUZ1G	 CUZ30	 CUZ12	 CUZ1Q	 CUZ1V	 CUZ24	 CUZ09
 CUZ46	 CUZ32	 CUZ08	 CUZ1R	 CUZ1W	 CUZ1Y	 CUZ62	 CUZ1T	 CUZ27	 CUZ35	 CUZ1S

Due to print technology, the colours do not completely represent the actual colours.

**GLOBAL ESD  
UPHOLSTERY FABRIC**

Fabric discharging static electricity,  
90 % wool, 10 % metal fibres  
Care: Dry clean  
50.000 Martindale  
Width: 150 cm  
Weight: 380 g/m<sup>2</sup>  
Colour fastness to light: 5 (EN ISO 105-  
B02), scale 1-8  
SL 1



135



137



141



153



161



167



191

**24/7 +  
UPHOLSTERY FABRIC**

50 % polyamide, 33 % wool, 10 % visil,  
7 % viscose  
Care: Dry clean  
400.000 Martindale  
Width: 140 cm  
Weight: 435 g/m<sup>2</sup>  
Colour fastness to light: 6 (EN ISO  
105-B02), scale 1-8  
SL 1



WK001



WK002



WK003



WK008



WK009



WK012



WK013



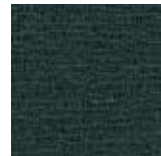
WK017



WK018



WK020



WK021



WK023



WK025

Due to print technology, the colours do not completely represent the actual colours.

## MEDLEY UPHOLSTERY FABRIC

100% polyester

Care: Wet cleaning, max. 74°C,  
dry clean

70.000 Martindale

Width: 140 cm

Weight: 364 g/m<sup>2</sup>

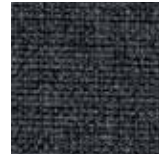
Colour fastness to light: 5-7 (EN ISO  
105-B02),

scale 1-8

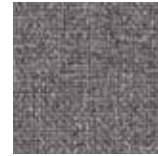
SL 1



60003



60004



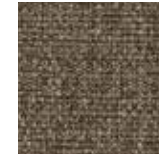
60167



60999



61002



61003



61004



61189



62002



62054



63013



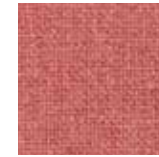
63016



63017



63063



63064



64019



64123



64124



64125



65011



65012



65086



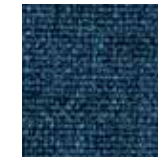
66007



66008



66009



66010



66144



66145



67002



67006



67052



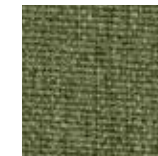
67053



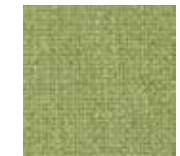
67054



68002



68005



68114



68115

Due to print technology, the colours do not completely represent the actual colours.

## SILVERTEX UPHOLSTERY FABRIC

100% vinyl, PU coating

Care: wipe clean routinely with a microfibre cloth lightly dampened with mild soap water.

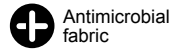
300.000 Martindale

Width: 137 cm

Weight: 685 g/m<sup>2</sup>

Colour fastness to light: 7 (EN ISO 105-B02), scale 1-8

SL 1



								
00001 Macadamia	0002 Sandstone	0005 Mocca	0009 Taupe	0013 Orange	0073 Luggage	1010 Beige	1014 Umber	1077 Cream
								
1051 Sisal	1078 Champagne	2003 Cobre	2011 Red	2012 Sunkist	2016 Raspberry	2064 Wine	3001 Turquoise	3007 Sapphire
								
3066 Baltic	3067 Delft	3068 Jet	4001 Plata	4002 Storm	4003 Graphite	4004 Ice	4010 Titanium	4011 Sterling
								
4012 Shiitake	4024 Meteor	5008 Pistacho	5009 Sage	5010 Bottle	5019 Celery	5020 Basil	5063 Forest	6004 Rubín
								
6061 Mandarin	6062 Melon	6065 Safran	7001 Aubergine	7002 Magenta	9001 Black	9002 Carbon		





Due to print technology, the colours do not completely represent the actual colours.

## VITA UPHOLSTERY FABRIC

Surface: 98.5% PVC, 1.5% PU,

Substrate: 50% Polyester 50% Cotton

Care: Wipe clean routinely with a micro-fibre cloth lightly dampened with warm water. Rinse after wiping.

Width: 140 cm

Weight: 850 g/m<sup>2</sup> (± 10%)

Colour fastness to light: 6 (EN ISO 105-B02), scale 1-8

SL 1



Seal ITA01



Oatmeal ITA02



Yellow ITA03



Koala ITA04



Squash ITA05



Avocado ITA06



Hippo ITA07



Tomato ITA08



Olive ITA09



Taupe ITA10



Rust ITA11



Noir ITA12



Americano ITA13



Espresso ITA14



Porcelain ITA15



Sapphire ITA16



Amethyst ITA17



Waterfall ITA18



Peacock ITA19



Pink ITA20



Marina ITA21



Navy ITA22



Plum ITA23

# LEATHER

Due to print technology, the colours do not completely represent the actual colours.

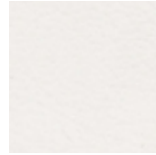
## LENA - LEATHER

Care: Light vacuum and damp cloth  
 Colour fastness to light: 5 (EN ISO 105-B02), scale 1-8  
 Fire resistance: EN ISO 1021-1/2  
 Thickness ~ 0,9 mm  
 TT = Two tone

										
Snow White	White	5432	3394	3396	3390	3360	3388	3350		
										
3322	3326	3370	382 (TT)	3392	5461	2532	3328	2557		
										
6400	6367	621 (TT)	632 (TT)	6677	5478	665 (TT)	654 (TT)	3364	643 (TT)	5458
										
6688	6622	5484	3324	2577	7704	7708	7701	3368	610 (TT)	2535
										
6699	2561	5454	837 (TT)	3338	2527	3348	6644	443	2583	505 (TT)
										
2523	2526	2500	Black	Verde Futura						

### COLUMBIA - LEATHER

Care: Light vacuum and damp cloth  
Thickness ~ 1,1mm  
Fire resistance: EN ISO 1021-1/2  
Colour fastness to light: 5 (EN ISO 105-B02)



12100

---

### SILK - LEATHER

Care: Light vacuum and damp cloth  
Thickness ~ 1,1mm  
Fire resistance: EN ISO 1021-1/2  
Colour fastness to light: 3 (EN ISO 105-B02)



0197



0229



0250



0258



0329



0549



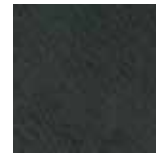
0550



0551



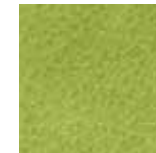
0565



0681



0691



0692



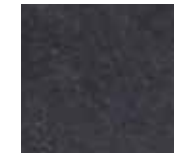
0738



0778



0779



0780



0842



0854



0855



03009



04009



04010



04060



07008